

7

()

SPSS, Minitab,)

(SAS

(Microsoft Excel)

1-7

2001 11

()
(12-3)

72

35	339	650	864	1025	1261
38	340	655	883	1028	1280
48	395	669	883	1036	1290
53	457	703	890	1044	1312
70	478	730	934	1087	1341
99	501	763	951	1091	1355
138	521	788	969	1126	1357
164	556	789	985	1176	1360
220	583	789	993	1199	1414
265	595	802	997	1199	1436
272	596	822	999	1237	1479
312	604	851	1018	1242	1492

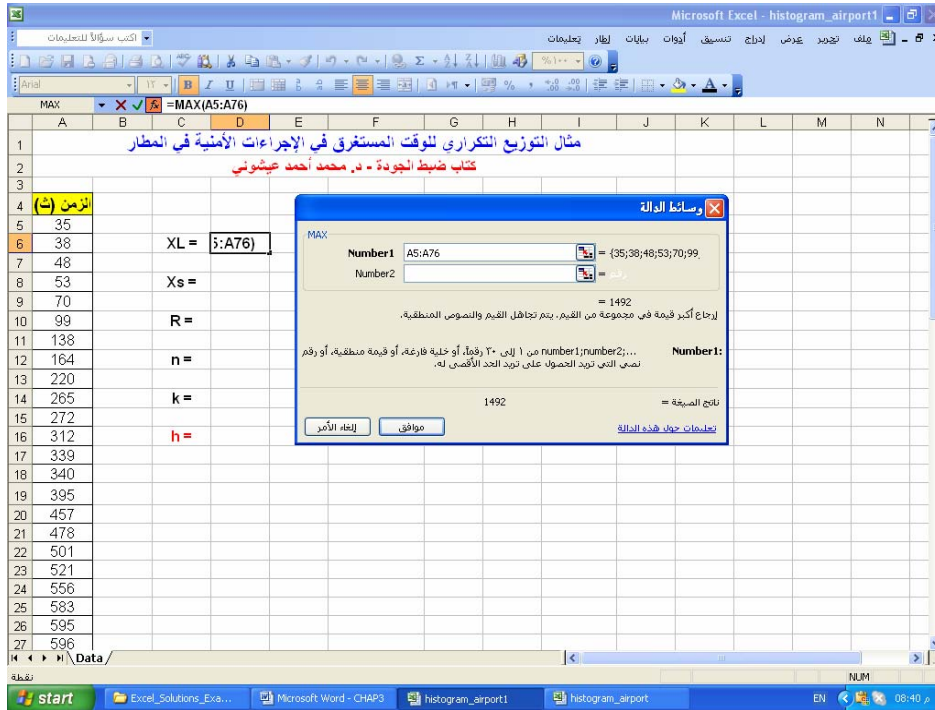
12-3

(A)

$$\begin{aligned}
 & \text{.(17-3)} \\
 & (X_S) \quad (X_L) \quad (2-5) \\
 & : \quad (\text{Min}) \quad (\text{Max}) \\
 & =\text{Max}(A5:A76) : (D6) \\
 & =\text{Min}(A5:A76) : (D8) \\
 & =D6-) \quad (D10) \quad (R=X_L-X_S) \\
 & (k=7) \quad (n=72) \quad (D8) \\
 & (h=R/k) \quad .(5-3) \\
 & .(208.14) \quad (D16=D10/D14) \\
 & (225) \\
 & . (13-3)
 \end{aligned}$$

225	0	1
450	225	2
675	450	3
900	675	4
1125	900	5
1350	1125	6
1575	1350	7

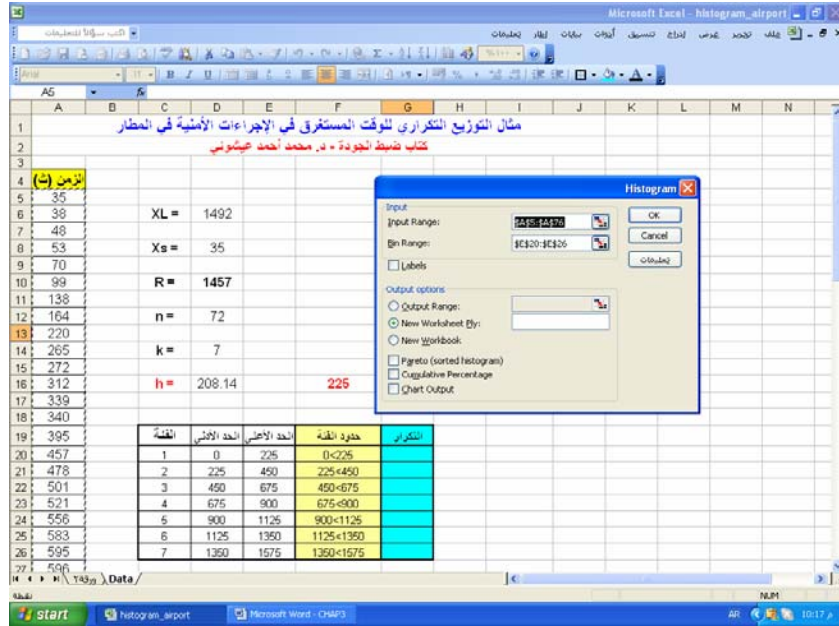
13-3



(XL)

22-3

"Histogram" "Data Analysis" " " (Input Range) (18-3) (Bin Range)



Histogram 18-3

(14-3).

Bin	Frequency
0<225	9
225<450	6
450<675	12
675<900	13
900<1125	14
1125<1350	11
1350<1575	7
More	0

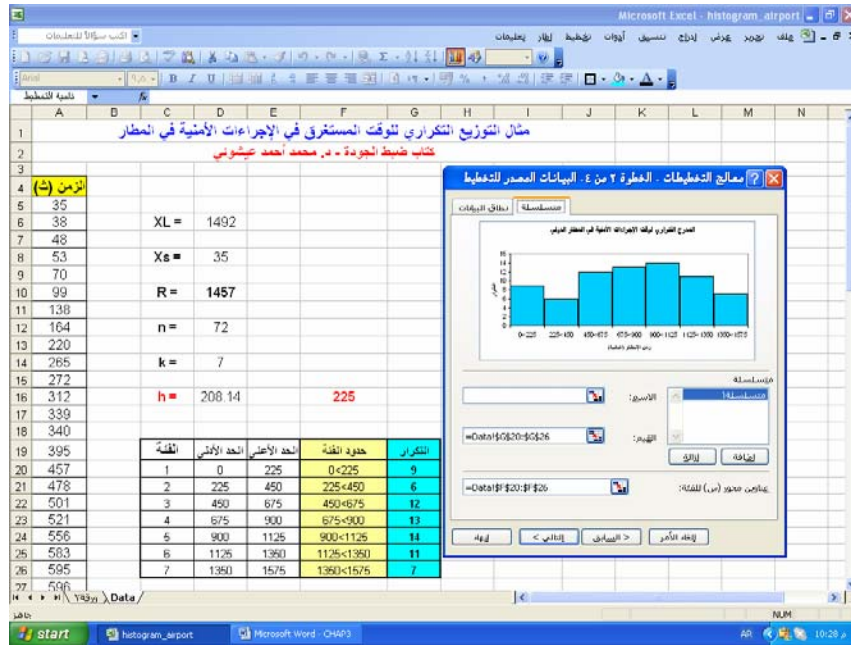
14-3

(15-3)

(19-3).

9	0<225	1
6	225<450	2
12	450<675	3
13	675<900	4
14	900<1125	5
11	1125<1350	6
7	1350<1575	7

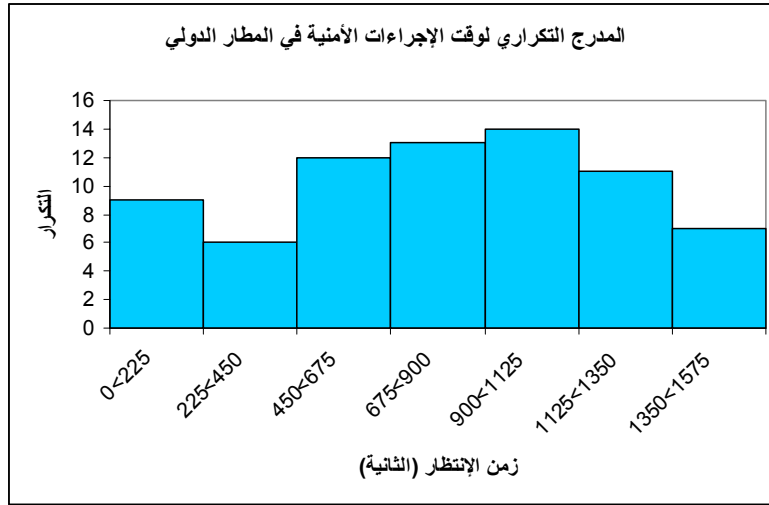
15-3



19-3

(20-3)

histogram_airport.xls



20-3

.(16-3)

8

-

0	13090	22	1
2	11130	13	2
1	12320	10	3
0	16415	16	4
2	31941	23	5
1	11410	13	6
0	15092	11	7
0	12292	13	8

16-3

(1-7)

(A)

(D)

(C)

(B)

(26-3)

(B14)

(fx)

(AVERAGE)

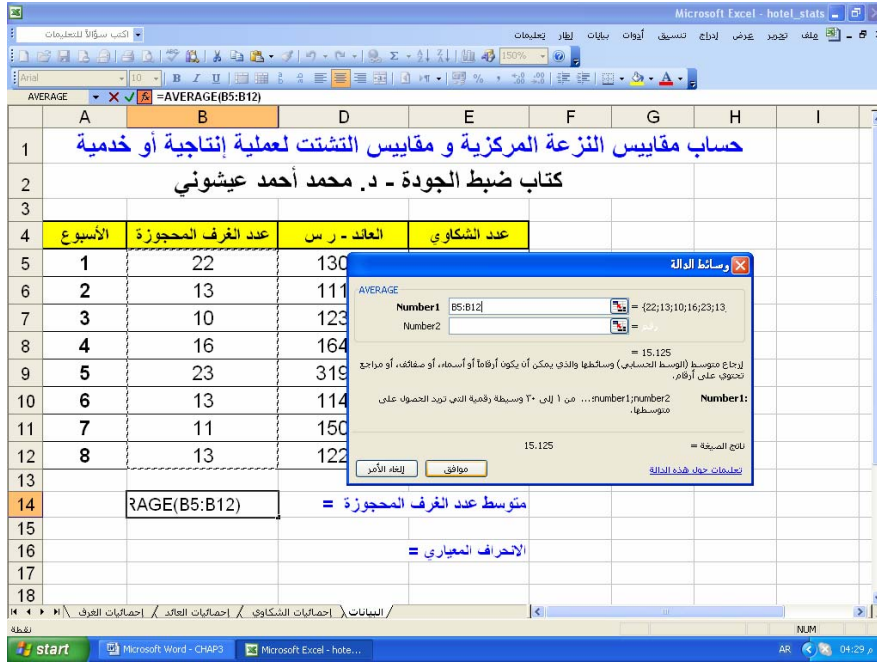
"

"

=

.(21-3)

(B5:B12)



21-3

"Data Analysis" (Tools) " (22-3)

"Descriptive Statistics" (23-3)

(Summary Statistics) (B4:B12)

" (17-3)

The screenshot shows an Excel spreadsheet with the following data:

الأسبوع	عدد الغرف المحجوزة	العائد - ر س	عدد الشكاوي
1	22	13090	0
2	13	11130	2
3	10	12320	1
4	16	16415	0
5	23	31941	2
6	13	11410	1
7	11	15092	0
8	13	12292	0
متوسط عدد الغرف المحجوزة		=	
4.883		=	

The Data Analysis menu is open, showing options like Data Analysis, Data Conversion, and Data Import/Export.

22-3

The screenshot shows the same Excel spreadsheet with a Descriptive Statistics dialog box open. The dialog box is configured as follows:

- Input Range: \$B\$4:\$E\$12
- Grouped By: Columns
- Labels in First Row:
- Output options:
 - Output Range: (empty)
 - New Worksheet Ply: (selected)
 - New Workbook:
- Summary statistics: (checked)
- Confidence Level For Mean: 95%
- kth Largest: 1
- kth Smallest: 1

The spreadsheet data is the same as in the previous image.

23-3

Mean	15.125
Standard Error	1.726
Median	13
Mode	13
Standard Deviation	4.883
Sample Variance	23.839
Kurtosis	-0.604
Skewness	0.950
Range	13
Minimum	10
Maximum	23
Sum	121
Count	8

17-3

hotel_stats.xls

.(18-3)

()			
0.75	15461.25	15.125	Mean
0.313	2439.756	1.726	Standard Error
0.5	12705	13	Median
0	-----	13	Mode
0.786	47619274.5	23.839	Sample Variance
-1.481	6.381	-0.604	Kurtosis Factor
0.615	2.465	0.950	Skewness Factor
2	20811	13	Range
0	11130	10	Minimum
2	31941	23	Maximum
6	123690	121	Sum
8	8	8	Count